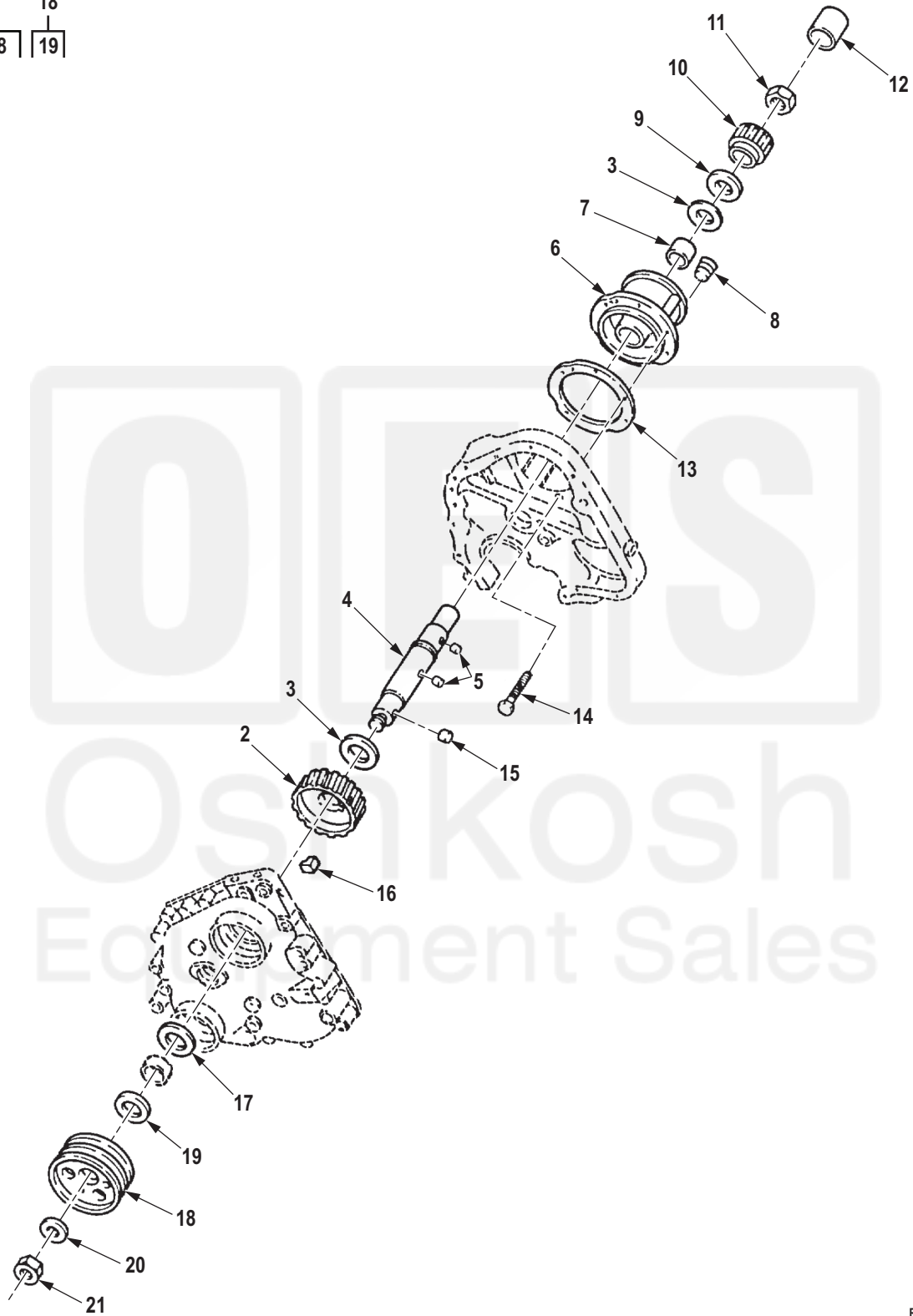


1	6	18
2-11	7-8	19



R0044DAA

Figure 44. Accessory Drive, Pulley, and Related Parts (M939, M939A1).

(1) ITEM NO.	(2) SMR CODE	(3) NSN	(4) CAGEC	(5) PART NUMBER	(6) DESCRIPTION AND USABLE ON CODE (UOC)	(7) QTY
10	PAHZZ	3010-01-085-2732	15434	3000174	. COUPLING HALF,SHAFT UOC: DAC,DAD,DAE,DAF,DAG,DA H,DAJ,DAL,DAW,DAX,V14,V15,V16, V17,V18,V19,V20,V21,V22,V24	1
11	PAHZZ	5310-00-442-6899	15434	191517	. NUT,SELF-LOCKING,HE UOC: DAC,DAD,DAE,DAF,DAG,DA H,DAJ,DAL,DAW,DAX,V14,V15,V16, V17,V18,V19,V20,V21,V22,V24	1
12	PAHZZ	3010-01-079-3461	15434	199349	COUPLING,SHAFT,RIGI UOC: DAC,DAD,DAE,DAF,DAG,DA H,DAJ,DAL,DAW,DAX,V14,V15,V16, V17,V18,V19,V20,V21,V22,V24	1
13	PAHZZ	5330-00-026-2931	15434	3069101	GASKET PART OF KIT P/N 3011472 UOC: DAC,DAD,DAE,DAF,DAG,DA H,DAJ,DAL,DAW,DAX,V14,V15,V16, V17,V18,V19,V20,V21,V22,V24	1
14	PAHZZ	5305-01-119-8621	15434	3010590	SCREW UOC: DAC,DAD,DAE,DAF,DAG,DA H,DAJ,DAL,DAW,DAX,V14,V15,V16, V17,V18,V19,V20,V21,V22,V24	5
15	PAHZZ	2815-01-124-0232	15434	70550	PIN,PISTON UOC: DAC,DAD,DAE,DAF,DAG,DA H,DAJ,DAL,DAW,DAX,V14,V15,V16, V17,V18,V19,V20,V21,V22,V24	3
16	PAFZZ	5330-01-129-6541	15434	3008947	RUBBER STRIP PART OF KIT P/ N 3011472 UOC: DAC,DAD,DAE,DAF,DAG,DA H,DAJ,DAL,DAW,DAX,V14,V15,V16, V17,V18,V19,V20,V21,V22,V24	1
17	PAFZZ	5330-00-135-6382	15434	211255	SEAL,PLAIN ENCASED PART OF KIT P/N 3011472 UOC: DAC,DAD,DAE,DAF,DAG,DA H,DAJ,DAL,DAW,DAX,V14,V15,V16, V17,V18,V19,V20,V21,V22,V24	1
18	PAFFF	3020-01-195-6990	15434	303050600	PULLEY,GROOVE UOC: DAC,DAD,DAE,DAF,DAG,DA H,DAJ,DAL,DAW,DAX,V14,V15,V16, V17,V18,V19,V20,V21,V22,V24	1
19	PAFZZ	2930-00-401-9531	15434	190397	. SLEEVE,PULLEY,PUMP UOC: DAC,DAD,DAE,DAF,DAG,DA H,DAJ,DAL,DAW,DAX,V14,V15,V16, V17,V18,V19,V20,V21,V22,V24	1
20	PAFZZ	5310-01-124-6463	15434	193136	WASHER,FLAT UOC: DAC,DAD,DAE,DAF,DAG,DA H,DAJ,DAL,DAW,DAX,V14,V15,V16, V17,V18,V19,V20,V21,V22,V24	1